

# Suction Pipe

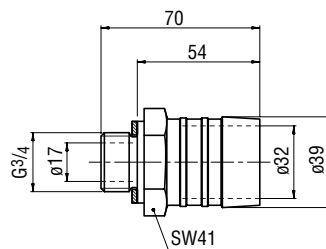
**RE 95004/02.97**  
replaces 08.95

for axial piston pump KFA and KVA suction port S

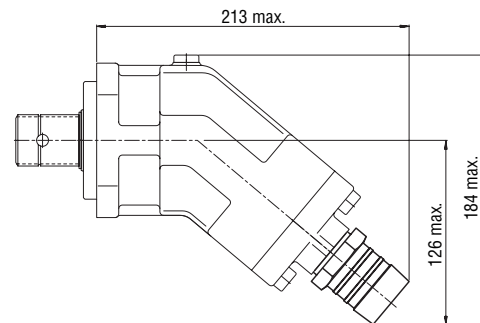
## Suction pipe for KFA 23, 32

(Attention: follow the assembly instructions on page 4)

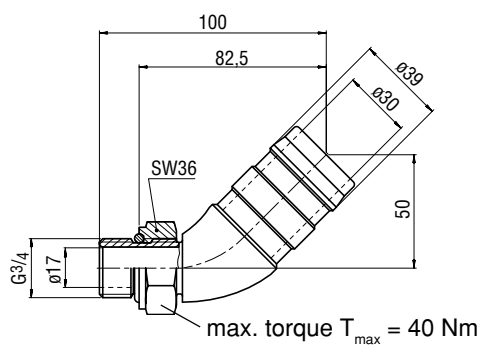
**Straight suction pipe** (ordering no.: 9831856)



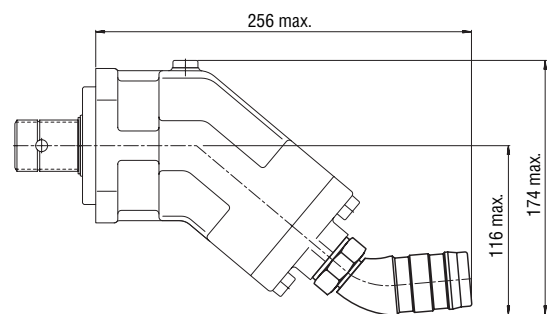
mounted on KFA 23, 32



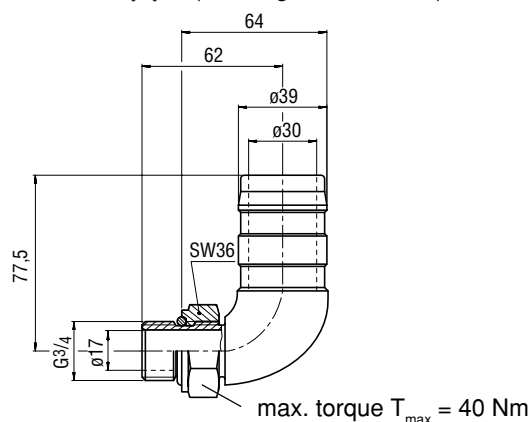
**45° suction pipe** (ordering no.: 9831601)



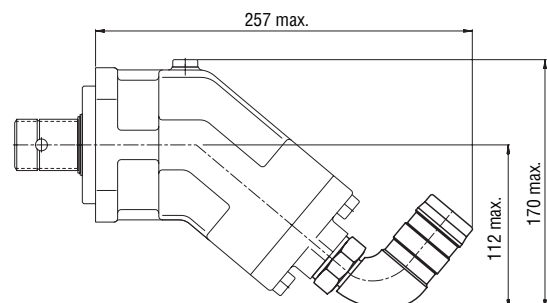
mounted on KFA 23, 32



**90° suction pipe** (ordering no.: 9831602)



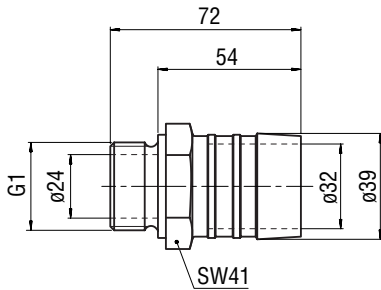
mounted on KFA 23, 32



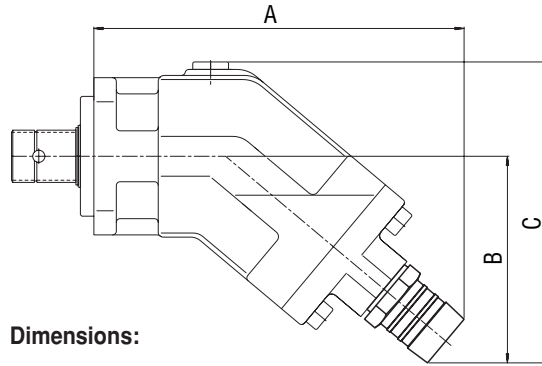
### Suction pipe for KFA 45, 63

(Attention: follow the assembly instructions on page 4)

#### Straight suction pipe (ordering no.: 2600251)



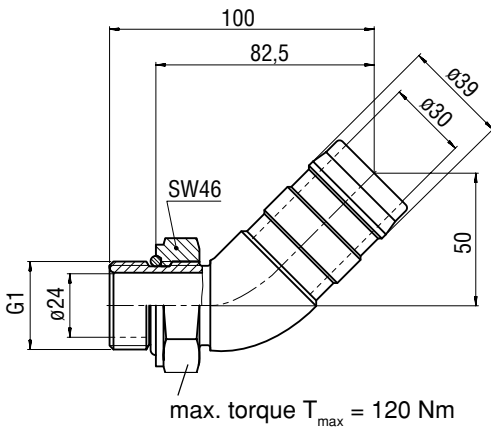
mounted on KFA 45, 63



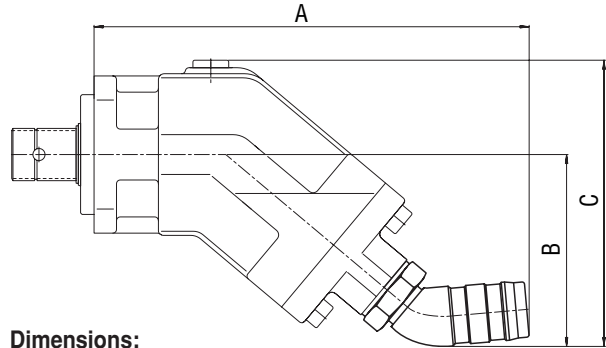
Dimensions:

Size	A	B	C
45	247	138	201
63	256	145	208

#### 45° suction pipe (ordering no.: 9831600)



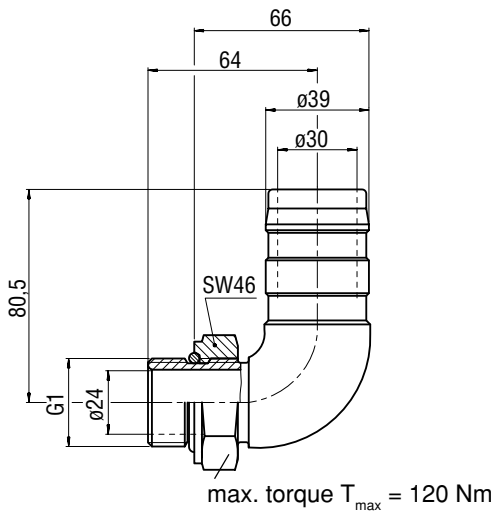
mounted on KFA 45, 63



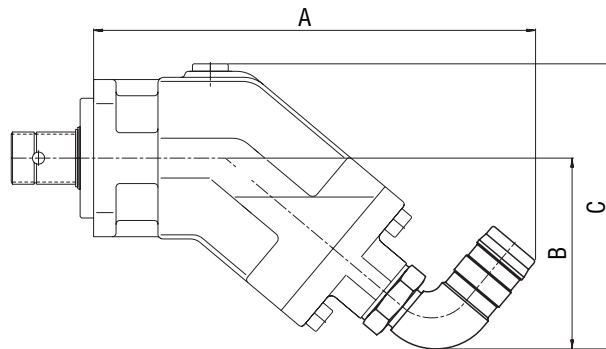
Dimensions:

Size	A	B	C
45	291	128	191
63	300	135	198

#### 90° suction pipe (ordering no.: 9831599)



mounted on KFA 45, 63



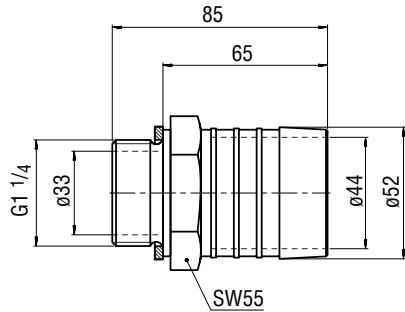
Dimensions:

Size	A	B	C
45	295	128	191
63	304	135	198

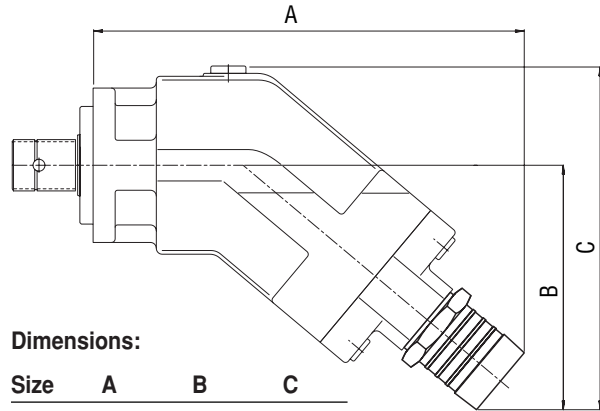
### Suction pipe for KFA 80, 107 and KVA 107

(Attention: follow the assembly instructions on page 4)

#### Straight suction pipe (ordering no.: 2600252)



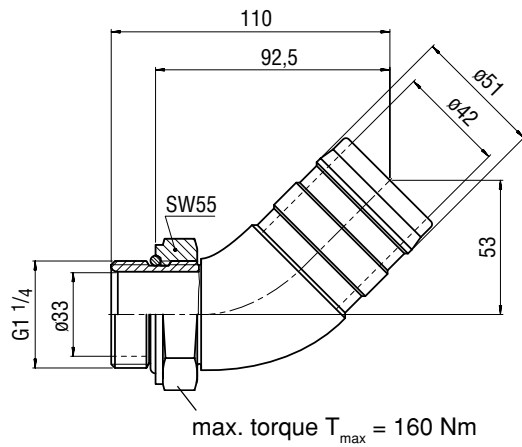
mounted on KFA 80, 107



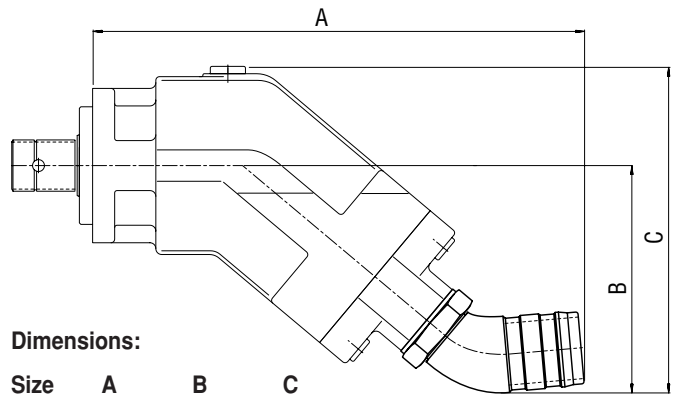
Dimensions:

Size	A	B	C
80	293	166	234
107	304	175	249

#### 45° suction pipe (ordering no.: 9831597)



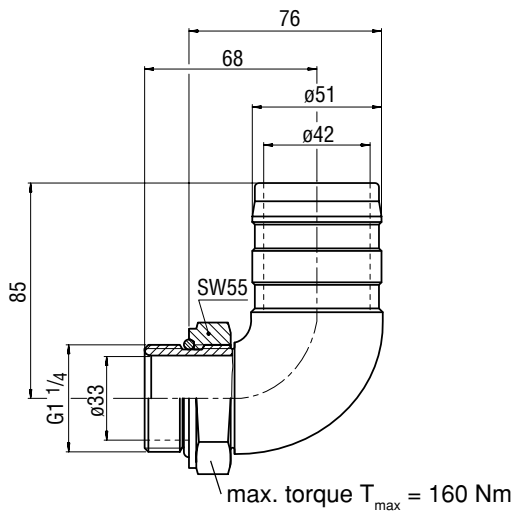
mounted on KFA 80, 107



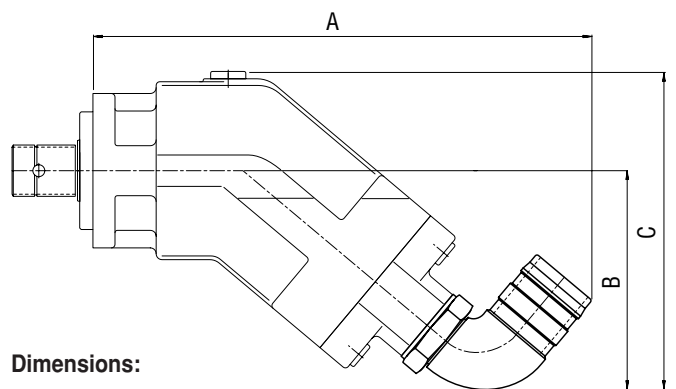
Dimensions:

Size	A	B	C
80	334	155	222
107	345	164	237

#### 90° suction pipe (ordering no.: 9831598)



mounted on KFA 80, 107



Dimensions:

Size	A	B	C
80	339	149	216
107	350	158	231

## Assembly instructions for suction pipes

### 1) General notes

- the suction line must be as short and as straight as possible
- use reinforced a plastic hose with spiral spring
- on fitting the hose, make sure that it is able to bend
- ensure that the couplings are sealed from air (mount suction hose with **two** hose clamps), and that the suction hose is resistant to compression from external air pressure
- sealing elements are included in the delivery of the suction pipe

### 2) Assembly sequence

- assemble the suction pipe (45° or 90°), as a first step, then use the locking parts for the high pressure line
- disassembly in reversed sequence
- grease O-ring before assembly

### 3) Tightening torques

Take care of the max. tightening torques  $T_{max}$  for suction pipes indicated on pages 1-3; otherwise risk of excess extension of material

### 4) Change of seals

Renew all seals after any disassembly respectively new installation in order to assure a complete sealing. These O-rings prevent air entrance into the suction line.

#### **Ordering no. for O-rings:**

O-ring for suction pipe G  $\frac{3}{4}$ " \_\_\_\_\_ 083796  
 O-ring for suction pipe G 1" \_\_\_\_\_ 083802  
 O-ring for suction pipe G1  $\frac{1}{4}$ " \_\_\_\_\_ 083808